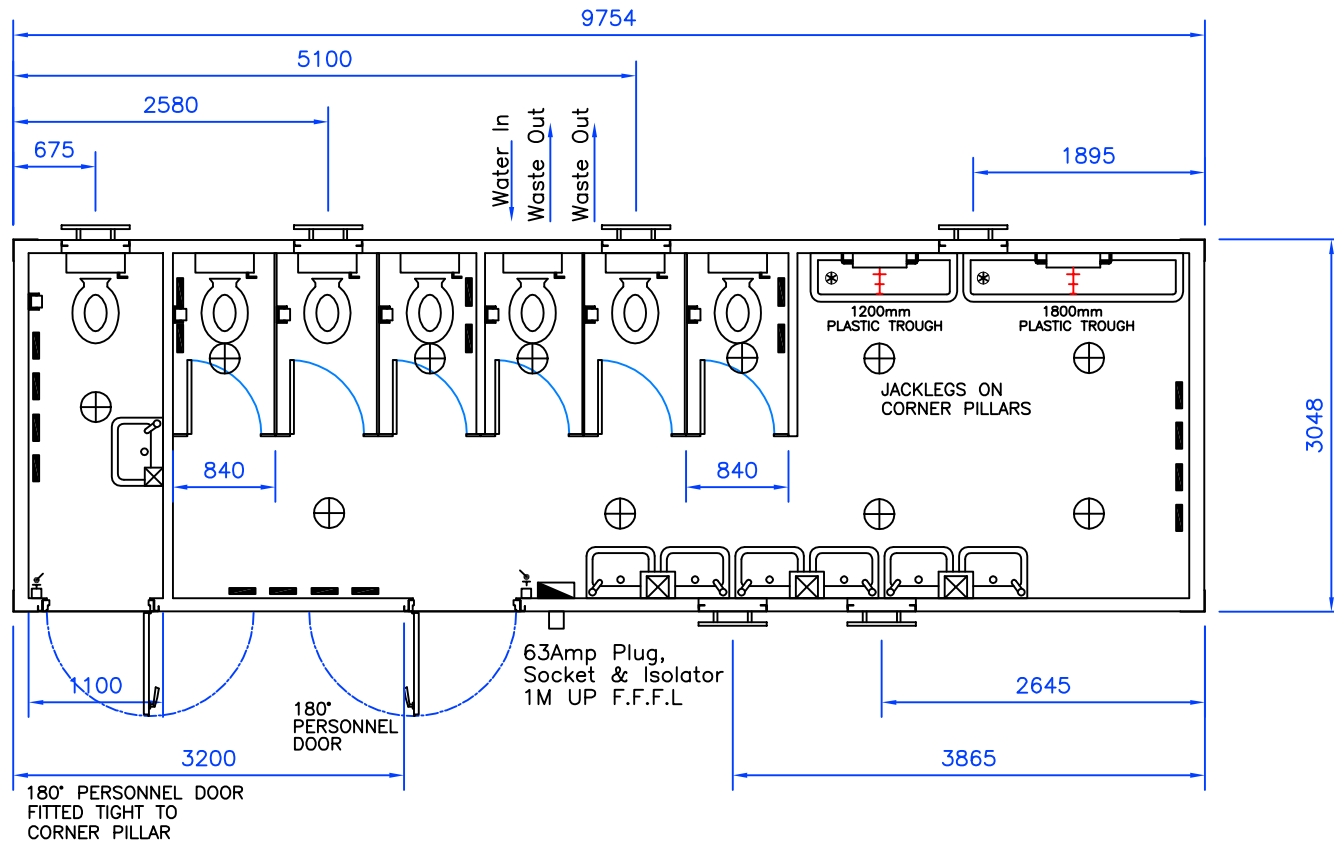


**\*PLEASE NOTE\***  
**USE 8ft. CORNER PILLARS**



**KEY TO SYMBOLS**

	Consumer Unit
	Light Pullswitch
	Bulkhead Light
	Fused Spur & Thermostat
	2' Tube Heater + Guard
	4' Tube Heater + Guard
	2kW 5Ltr Water Storage Heater
	3kW Instant Water Heater
	Earth Bond 1600mm Up F.F.F.L

**APPROVAL BOX**

Customer:  
 Signature:  
 Name:  
 Date:

\* THE WATER SUPPLY (WATER FITTINGS) REGULATIONS 1999 \*

LINED USING EGB2001 & INSULATED.  
 MONO-WHITE CEILING PANELS.  
 WOODSTAIN TRIM.  
 'POLYFLOR' VINYL FLOORING.

FIT DRAIN-OFF VALVE ABOVE  
 INCOMING STOP-TAP.

FIT ISOLATION VALVES TO ALL WATER  
 CISTERNS AND WATER HEATERS.

FIT CISTERMISER TO URINAL CISTERN.

ISSUE	DATE	DESCRIPTION
1	24/07/07	FIRST ISSUE

This document is the property of LYDNEY CONTAINERS Ltd. and should not be used or copied without express permission from:-  
 LYDNEY CONTAINERS Limited, Harbour Road,  
 Lydney, Gloucestershire, GL15 4EJ

TITLE Termospace  
 32'x10' 6+1 Toilet Unit

DRAWN	JT	DATE	24/07/07	DRG. No. TER_TO3210V01
APPROVED		DATE		
CHECKED		DATE		